

MAY'S NEWSLETTER

Building Information:
399 Washington Street
East Greenville, Pennsylvania
Phone # 215-679-5940
www.lifespanchildcare.org
[Facebook](#)

Important Dates

May 1st- First Friday in East Greenville, Come by and check out our table! Miss Mayra will be face painting

May 4th- Star Wars Day

May 5th- Cinco De Mayo

May 4th-8th- Teacher Appreciation Week

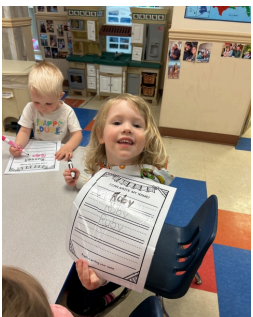
May 10th- Mother's Day

May 11th- Muffins with Mom

May 25th- Memorial Day. LifeSpan will be CLOSED.

May 29th- Kindergarten Prep 1 & 2 Graduation 5:30-7:30 at The Perk School Chapel

Welcome to our new families, please be sure to follow us on facebook and if you are interested their is a parent group for our location on facebook: LSEG Parents Group. This is completely parent run and operated and optional to join.



May's Tip of the Month: Spring Forward and Review Your Safety Checklist



Smoke Alarms

Three out of every five home fire deaths result from fires in homes with no smoke alarms, according to the National Fire Protection Association. Test your smoke alarms every month and replace the battery at least once a year. If the alarm makes a "chirping" sound, replace the battery immediately. Smoke alarms should be in every bedroom and in the common areas on each floor of a home. Mount them at least 10 feet from the stove to reduce false alarms, less than 12 inches from the ceiling and away from windows, doors and ducts. Smoke alarms can be interconnected wirelessly. That means, when one sounds, they all sound. A Consumer Product Safety Commission survey found this is the best way to notify everyone in a home if there is a fire. Be sure to purchase smoke alarms with the label of a reputable testing agency, like Underwriters Laboratories (UL).

Carbon Monoxide Detectors

Anything that burns fuel can potentially become a source of carbon monoxide, an invisible, odorless gas that can kill. CO alarms should be installed in a central location outside each bedroom and on every level of the home. The safety tips for CO detectors mirror those of smoke alarms: change the batteries, test them and interconnect them, if possible. Also, make sure vents for your gas appliances (fireplace, dryer, stove and furnace) are free and clear of snow or debris.

Family Emergency Plan

The National Safety Council recommends every family have an emergency plan in place in the event of a natural disaster or other catastrophic event. Spring is a great time to review that plan with family members. Have a home and car emergency kit. The Federal Emergency Management Agency says an emergency kit should include one gallon of water per day for each person, at least a three-day supply of food, flashlight and batteries, first aid kit, filter mask, plastic sheeting and duct tape, and medicines. Visit the FEMA website for a complete list. The emergency plan also should include:

- A communications plan to outline how your family members will contact one another and where to meet if it's safe to go outside
 - A shelter-in-place plan if outside air is contaminated; FEMA recommends sealing windows, doors and air vents with plastic sheeting
 - A getaway plan including various routes and destinations in different directions
- Also, make sure your first aid kit is updated.

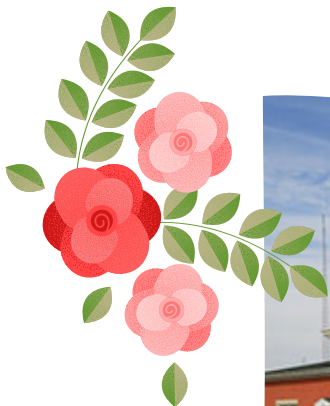
Get Rid of Unwanted Medicines

NSC recommends you take unwanted or expired medicines to a prescription drop box or take-back event near you. Or, learn how you can use Stericycle Seal & Send envelopes to send your unwanted medication to be safely destroyed.

Getting the Urge to Clean?

With the warm weather comes a desire to shine and polish your home. But when warning labels are ignored or chemicals fall into the wrong hands, disaster can occur. Learn what you can do to keep you family safe around poisons in the home.

More Information to be found here: <https://www.nsc.org/community-safety/safety-topics/seasonal-safety/spring-safety/spring-safety-tips>



Other Information

- ~ Don't forget to check out our LifeSpan Facebook page and website.
- ~ What information would you like to see on the newsletter? Let me know at kparis@lq.org
- ~ Please be sure to bring your child weather appropriate clothing ie: jackets may still be necessary on the chilly mornings or sunglasses and hats for the sun. Please also be sure your child is wearing closed-toed shoes. Our policy is to take the children outside between the real feel temperatures of 25 and 90 degrees. Please label all your children's belongings.

Happy Birthday



ELENA
MAY 4TH



MAEVE
MAY 13TH



BRYCE
MAY 23RD



EVERLY
MAY 25TH



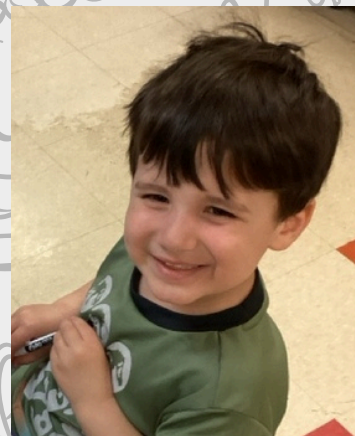
HANK
MAY 12TH



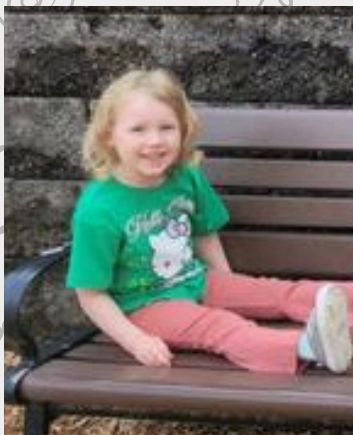
WILLIAM "LIAM"
MAY 14TH



KYLER
MAY 25TH



BENNETT
MAY 29TH



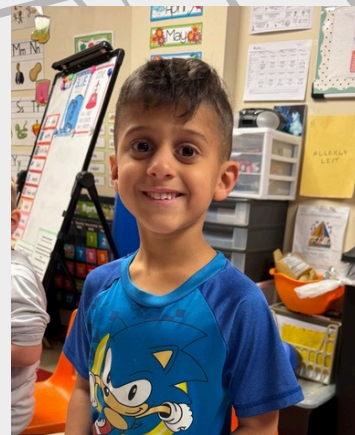
RUBY
MAY 13TH



CARSON
MAY 16TH



RYLEE
MAY 25TH



LIAM
MAY 30TH